



Did you know? Data Block Search allows you to select features on the graphics screen, and with the touch of a button, the control will jump to whatever conversational block or line of NC code that created that particular feature. This is an excellent way to navigate a lengthy program file. **Find out more at Hurco.com/WinMax.**

Machine Overview

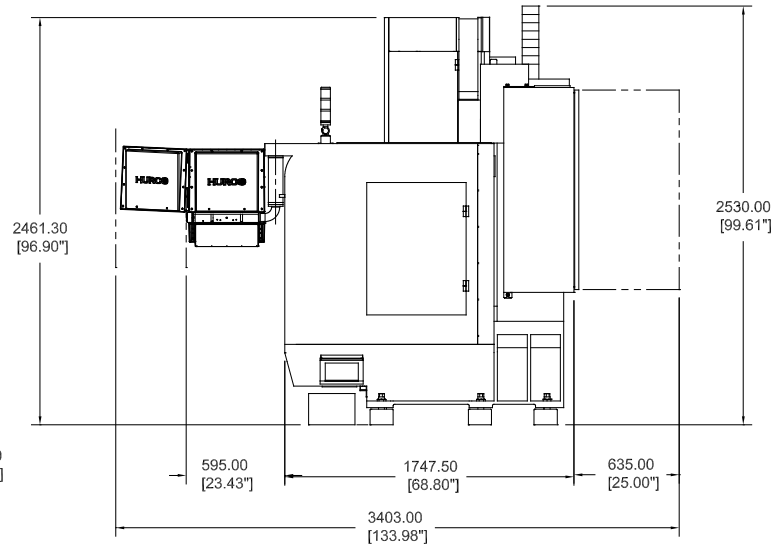
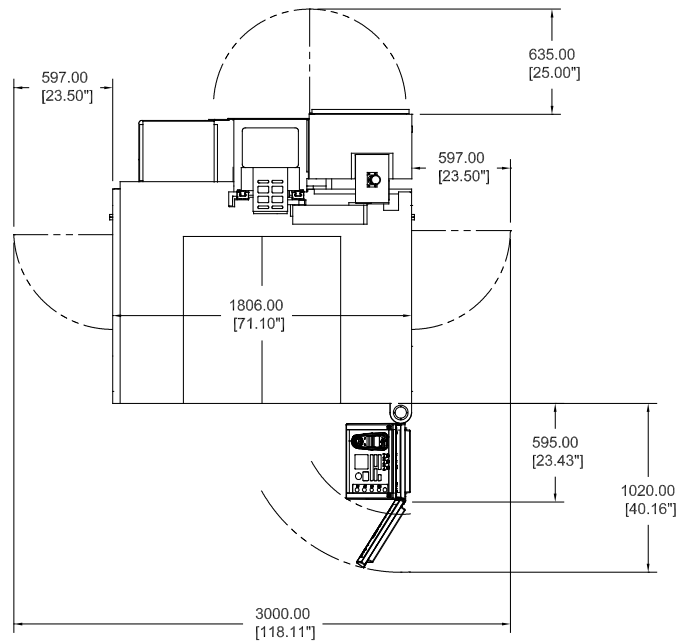
- » Small footprint / Large work cube
- » Solid cast iron frame
- » One-piece machine base
- » 26 x 16 x 20 in (660 x 406 x 508 mm) travels
- » 30 x 16 in (762 x 406 mm) table, 3,300 lbs (1,500 kg) capacity
- » 12,000 RPM spindle
- » 15 hp (11.0 kW) peak spindle
- » BIG-PLUS® spindle system / CAT 40 tooling
- » Robust control specifications (standard) – 2.7GHz Dual Core Processor, 4GB RAM Memory, 128GB Solid State Hard Drive, 10,000 block lookahead
- » Brushless AC Servos
- » Larger, heavy-duty linear rails on all three axes
 - Mounted to a machined shoulder for increased rigidity
 - Strategically spaced for increased strength
 - Wedge locked to a machined shoulder to reduce vibration instead of faster, cheaper face-milled process
- » Electric, side-mounted, 20-station, swing-arm ATC
- » 2.5 second tool-to-tool ATC time
- » Wider table extends across the entire Y-axis, which provides the flexibility needed to produce a high mix of parts
- » Yaskawa Sigma 5 drives
- » LED lighting shines brighter and saves energy
- » MAX5 ergonomically designed console with 19" LCD screen
- » WinMax Mill Conversational and Industry Standard NC programming
- » UltiMotion®

Machine specifications can be found on Pages 55-61

For more information about the Hurco Control, go to page 46.

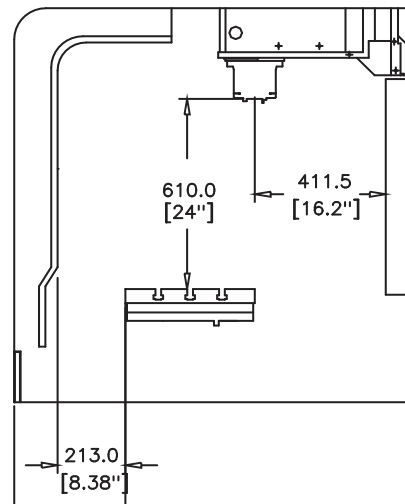
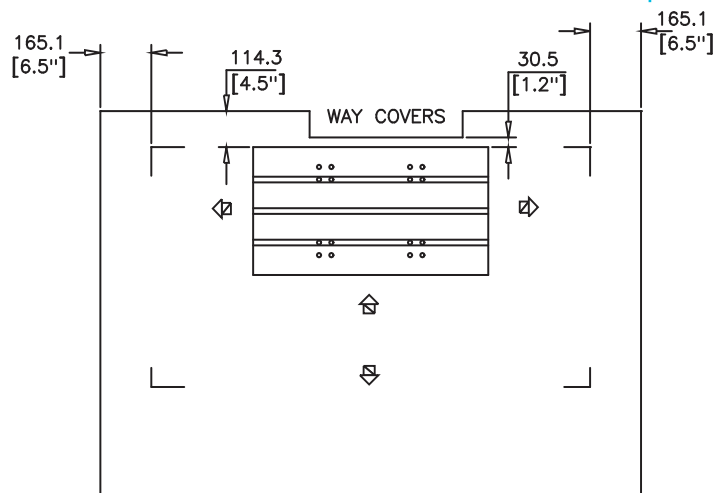
Machines shown with options. Specifications and information may change without notice.

POWER & CAPACITY VM10i



OPERATING DIMENSIONS

INTERIOR CLEARANCES



POWER & TORQUE

