



Did you know? By simply pressing the HELP control button, an interactive help screen will appear with context sensitive data and/or helpful links that correspond to whatever area of the control the operator is currently viewing on screen. You can also search the Hurco Control's interactive help system by typing key words into the search box. BONUS: the interactive help system is updated automatically if you update your control's software so the help system always matches the control software level of the machine.

Find out more at Hurco.com/WinMax.

Machine Overview

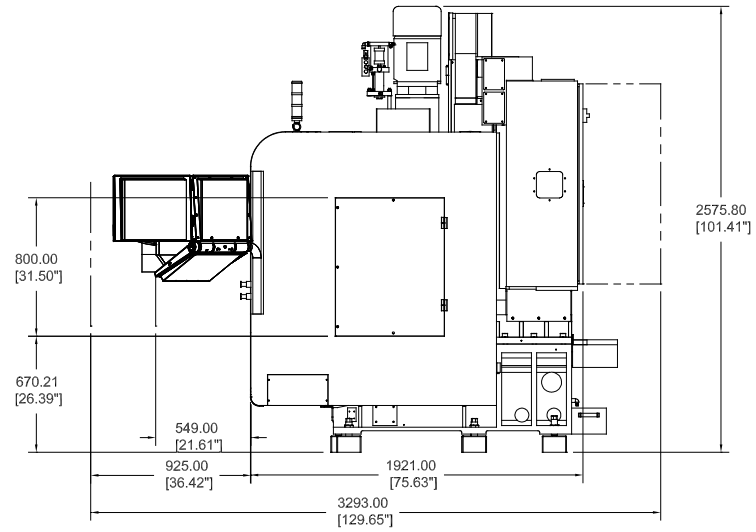
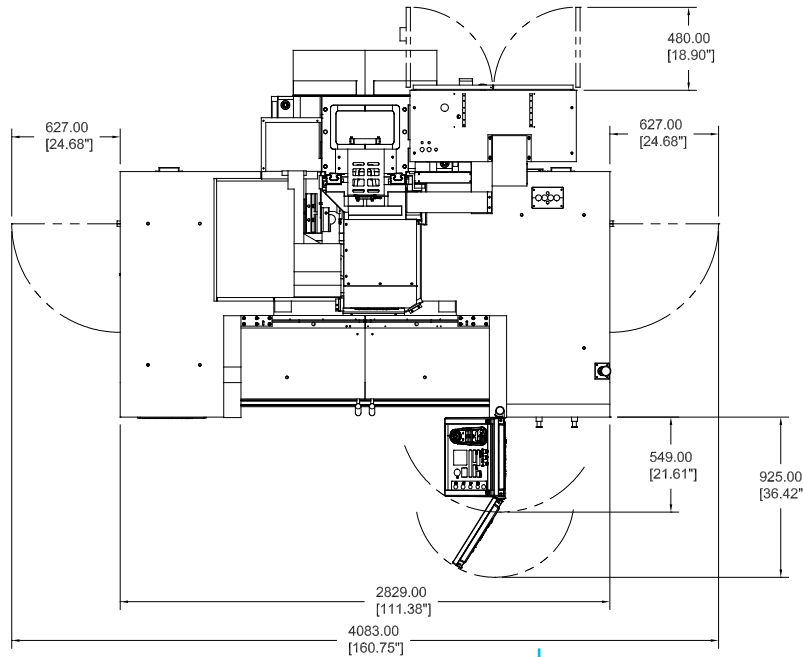
- » Small footprint / Large work cube
- » Solid cast iron frame
- » One-piece machine base
- » 50 x 20 x 20 in (1,270 x 508 x 508 mm) travels
- » 52 x 20 in (1,321 x 508 mm) table, 3,970 lbs (1,800) capacity
- » BIG-PLUS® spindle system / CAT 40 tooling
- » 12,000 RPM spindle
- » 20 hp (15 kW) peak spindle
- » Robust control specifications (standard) – 2.7GHz Dual Core Processor, 4GB RAM Memory, 128GB Solid State Hard Drive, 10,000 block lookahead
- » Brushless AC Servos
- » Larger, heavy-duty linear rails on all three axes
 - Mounted to a machined shoulder for increased rigidity
 - Strategically spaced for increased strength
 - Wedge locked to a machined shoulder to reduce vibration instead of faster, cheaper face-milled process
- » Electric, side-mounted, 20-station, swing-arm ATC
- » 2.5 second tool-to-tool ATC time
- » Wider table extends across the entire Y-axis, which provides the flexibility needed to produce a high mix of parts
- » Yaskawa Sigma 5 drives
- » LED lighting shines brighter and saves energy
- » MAX5 ergonomically designed console with 19" LCD screen
- » WinMax Mill Conversational and Industry Standard NC programming
- » UltiMotion®

Machine specifications can be found on Pages 55-61

For more information about the Hurco Control, go to page 46.

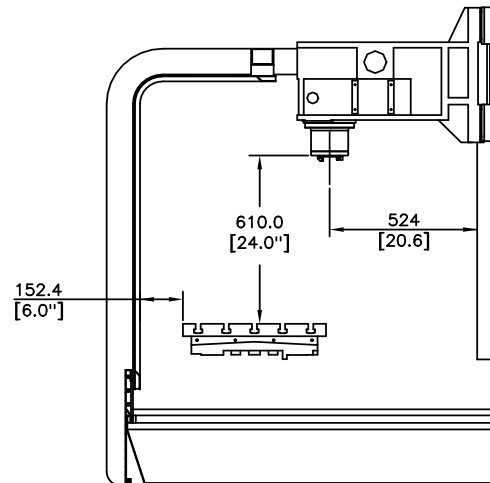
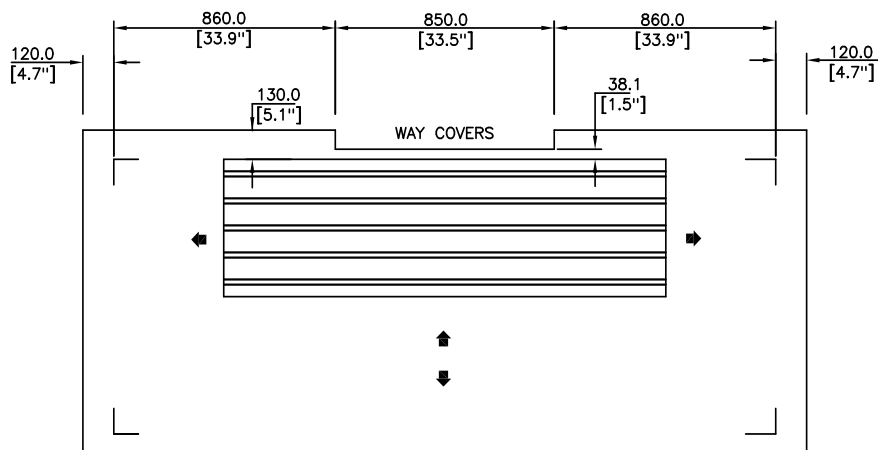
Machines shown with options. Specifications and information may change without notice.

POWER & CAPACITY VM30i



OPERATING DIMENSIONS

INTERIOR CLEARANCES



POWER & TORQUE

