

Machine Overview

- » Integrated trunnion table design provides more clearance in Z-axis and ability to machine heavier parts compared to 3-axis mills with trunnion table added
- » +110° / -110° B-axis motion delivers better undercut capability
- » 20.5" x 17.7" x 15.8" travels
- » 12,000 RPM spindle motor
- » Fast 945 ipm Rapid Traverse Rates (X, Y, Z)
- » Larger, heavy-duty roller ways on all three axes
- » Solid one-piece cast iron frame optimized with both static and dynamic Finite Element Analysis (FEA)
- » Yaskawa Sigma V Digital AC Servos
- » 2 or 4 passage rotary unions for hydraulics and/or air
- » Electric, side-mounted, 30-Station swing-arm ATC
- » Full Enclosure with wide front access doors and fully contained tool storage
- » Angular encoders for rotary axes
- » Pistol-style coolant and air guns
- » WinMax Mill Conversational and NC Programming
- » 5-axis/5-sided software features – Tool Path Linearization, Tool Center Point Management, Transform Plane, 3D Tool Compensation, Tool Vector Input & Retract, Shortest Angular Traverse, 3D Import
- » Ergonomically designed MAX5 console with 19" LCD screen
- » Robust control specifications (standard) – 2.7GHz Dual Core Processor, 4GB RAM Memory, 128GB Solid State Hard Drive
- » Z-axis regenerative brake – no counterbalance

Did you know? Hurco engineers have invented 3D Import, which includes 3D DXF technology that displays all geometry that the CAD system outputs, including splines. With 3D DXF, simply select the bottom of a contour, and the Z-axis depths will also be automatically input into the conversational block. **Visit Hurco.com/3DImport to learn more.**

Machine specifications can be found on Pages 46-49

For more information about the Hurco Control, go to page 38.

Machines shown with options. Specifications and information may change without notice.

POWER & CAPACITY

VC500i

OPERATING DIMENSIONS

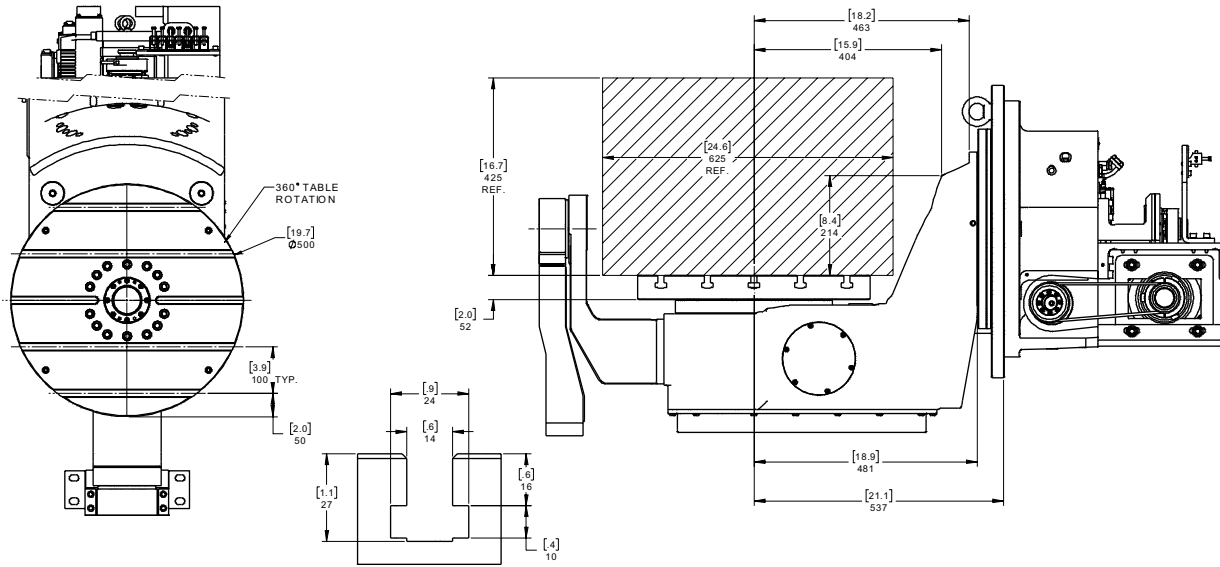
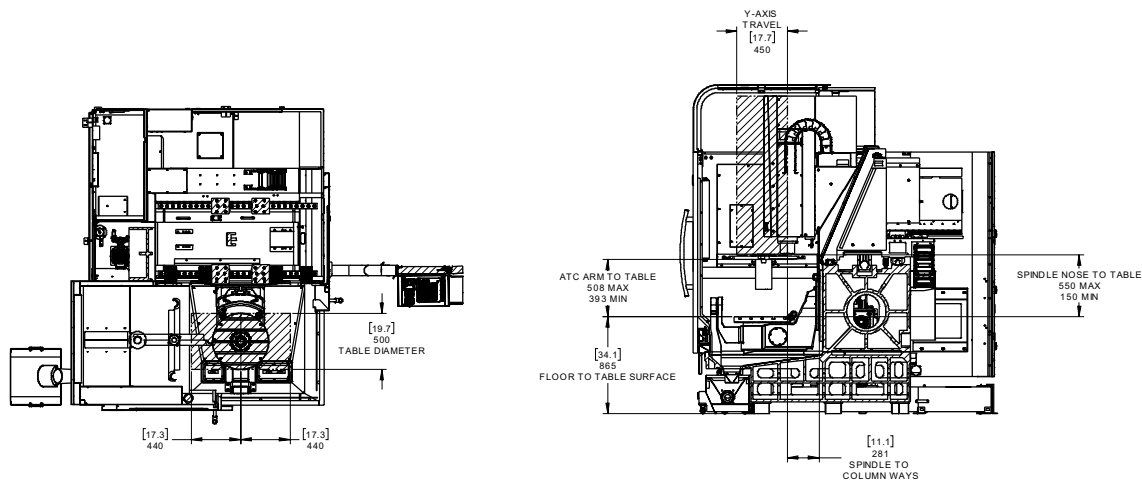


TABLE SPECIFICATIONS

INTERIOR CLEARANCES



POWER & TORQUE

